



WE WORK TO IMPACT
THE EDUCATION IN CHILE



Each time I talk with a graduate student, or I hear about a former student who went to college, I have the enormous satisfaction of having achieved a work well done.

Once the founders of Belén Educa, the entrepreneur Jorge Cisternas Larenas, the Education Vicar of that time, Juan de Castro Reyes, and me had a dream where all the children had the same opportunities that we had;

but a lot of people thought that dream was an utopia. We wondered how we could make the place where persons born not to be their doom. We had the conviction that all children could learn and deserved to be treated with dignity. We knew we had to put our talents, efforts and energy in service of our country.

We rised projects where no one wanted to be: schools in the poorest neighborhoods of the Metropolitan Region, in which today, over 14.000 student receive outstanding, free and comprehensive education. We strived to develop individuals with strong values, that believed in themselves and in the possibility of going to hither education. Our over 7.500 graduate students show us that equality is possible. We are an open and flexible organization, in continous and constant growth. We aim to achieve quality and we are hungry for new practices and learning from others. We know we can not impact the education in Chile alone; through an education network, culture, the Government, private companies and entrepreneurs we have to work in favor of the children of our country.

In Belén Educa we want to keep growing. Chile is large and we can not remove ourselves from the mission of empowering every child to fulfill their dreams and to develop their talents.

Juan Enrique Guarachi G.-H.
Executive Director, Belén Educa Foundation.

EQUALITY IS POSSIBLE



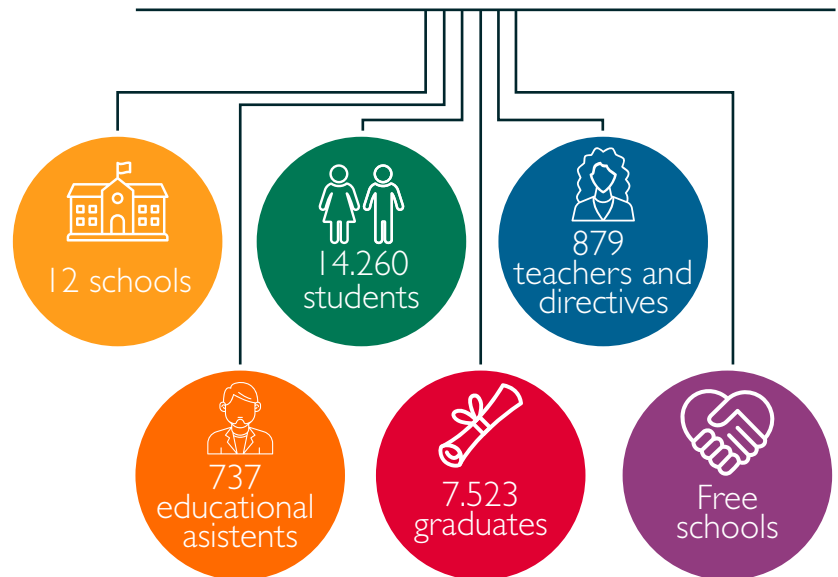
Belén Educa Foundation is a catholic non profit organization created in 2000 to provide high quality education in vulnerable and excluded places. Since the beginning, the Foundation has fostered a top standart educational project to develop their students in a holistic manner.

Belén Educa has the profound conviction that all children can learn and have the right to a high quality education that tranforms their lifes.

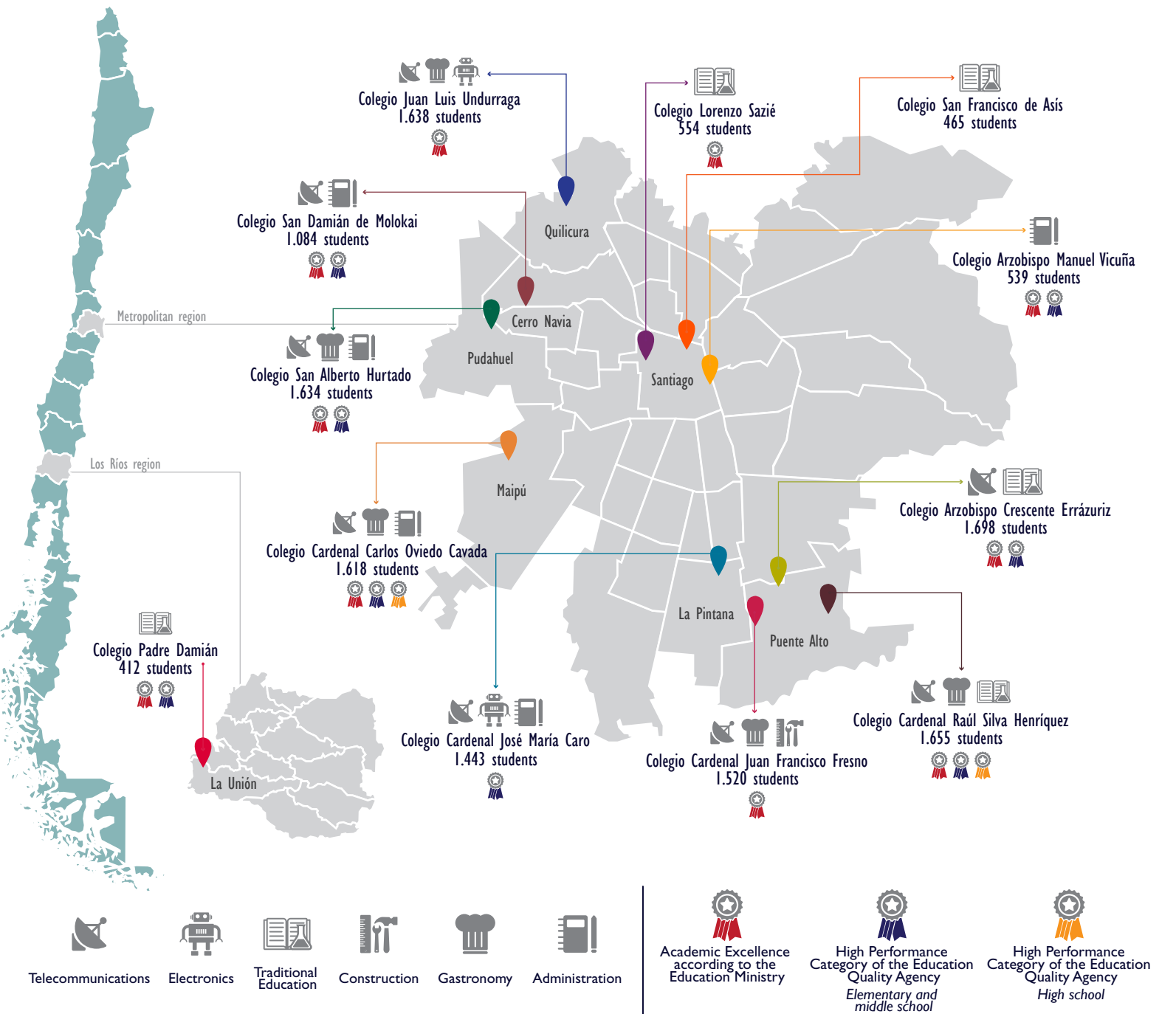
MISSION:



To offer boys, girls and young people of excluded places high quality education; developing a catholic educational project and fostering the commitment of the families with the formation of their sons and daughters.



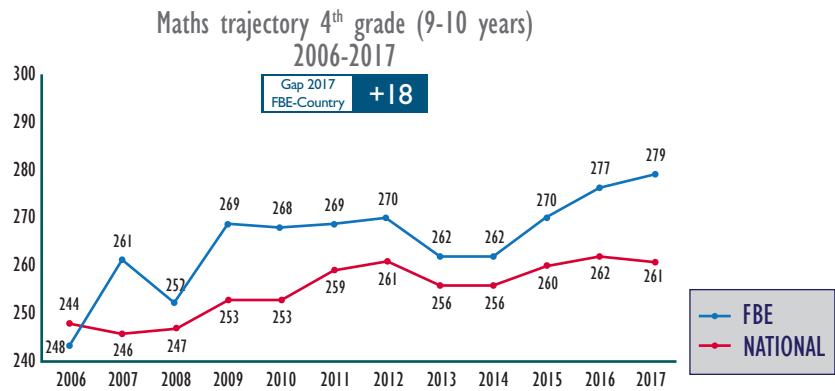
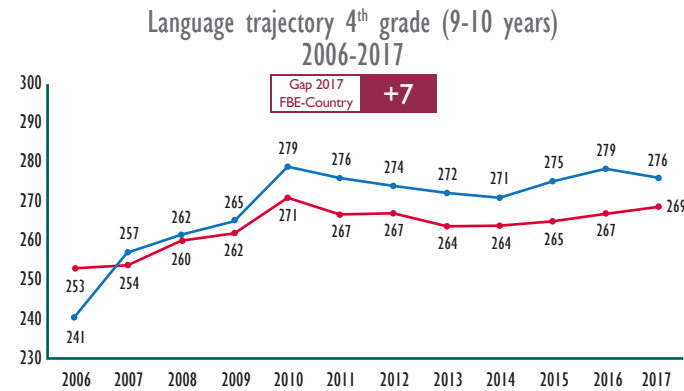
The schools are located in 9 townships of Big Santiago, and one in the Los Rios Region. 10 of the 12 schools have been recognized for their high performance by the Ministry of Education and the Education Quality Agency.



ACADEMIC RESULTS

Belén Educa's students achieve higher results than the national average in the standardized measurements.

SIMCE (Education Quality Measurement System)



Source: Mineduc, 2017. | Belén Educa's Management Report 2018.

PSU (University Admission Test)

790
Belén Educa's students took the PSU.

486 points
Average Language

511 points
Average Maths

Subsidized private schools
Demre 2016

448 points Average Language
446 points Average Maths

93,17%
Average attendance to Belén Educa's schools.

Source: Demre, 2017. | Belén Educa's Management Report 2017 and 2018.

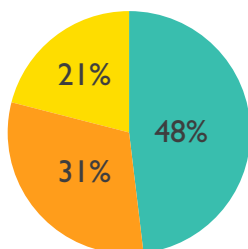


INCLUSIVE AND DIVERSE CLASSROOMS

Chile is ruled by the School Inclusion Law, that aims to provide high quality education, without depending on the financial capacity of the families nor arbitrary selection from the schools.

Income per capita of
a priority student:
**US\$0 to
US\$2.279 annual.**

Income per capita of
a preferential student:
**US\$2.279 to
US\$6.404 annual.**



- Priority students
- Preferential students
- Non-poverty condition

48% of Belén Educa's students belong to the 40% of the population with the lowest income in Chile. This means that they live with a range of US\$0 to US\$2.279 a year.



In October 2017, the Ministry of Interior Affairs announced the eleven high complexity neighborhoods, because of the insecurity and high rate of criminality. Belén Educa is present in 5 of those places.

4,3% of the Chilean population is immigrant. The same happens inside the Foundation, with 556 foreign students. However, two establishments highly

exceed the percentage of the country: the schools Juan Luis Undurraga (8,9 %) and San Francisco de Asís (48%).

Every 100 students, 15 children and young people have, temporary or permanent, special educational needs. This represents the 15,5% of the students.

Each establishment that belongs to the Foundation develops a School Integration Program, that supports the students with a multidisciplinary team of near 15 to 20 professionals.



Gender distribution:
51,3% men and
48,7% women.

Source: Belén Educa's Management Report, 2017.
National Socioeconomic Characterization Survey, 2011.
Crime Prevention Department, Ministry of Interior Affairs, 2017.
Censo, 2017



EDUCATE TO DISPLAY TALENTS

The work in the Belén Educa's classrooms seeks for every student to discover the areas where they can display and develop their talents.



Source: Belén Educa's Management Report 2017.

YOUNG BUILDERS OF A FAIRER SOCIETY

The Sello Belén is the footmark that remains in the mindset, feeling and acting of the young people that graduate from the schools of the Foundation. That footmark will be recognizable in the places where they continue to study, in their future jobs and in the homes and the society that they will build.

The Belén Educa Foundation works so that their students live an experience in their schools that makes them feel appreciated as original beings and committed to give their best; recognize in Jesus an essential referent for their life projects; and so they see themselves as builders of a fairer and more sympathetic society.

CHARACTER FORMATION

The Sello Belén is formed by 5 values, related to 20 virtues:



PROFESSIONALS FOR CHILE

During the last two years of school, in an approximated period of 2.000 hours, Belén Educa offers their students competences in a specialization field of Technical and Vocational education, that enables them to gain access to higher education and/or their first paid job.

The specialties that the Foundation schools offer are:



Telecommunications



Electronics



Construction



Gastronomy



Administration

80% of our students finish their internships in alliance with over 30 companies.

THE PATH TO HIGHER EDUCATION

63% of the Belén Educa's students goes to higher education when they graduate from school.

Truthful to the vision of hanker a fairer and sympathetic country, where everybody has the opportunity to foster their talents, Belén Educa has a commitment with the formation of their students, that goes beyond their graduation and it extends to their higher education stage. This is the origin of several accompaniment instances for the former students, to ensure that they finish their higher education and acquire tools to defeat their vulnerability. Some of this programs, that happen thanks to the support of private companies, are:

Pre- university studies: intensive preparation for the PSU (national selection test).

Key note speeches: senior executives from companies participate in educational talks.

Private scholarships for outstanding students.

Tutoring: vocational orientation sessions with senior executives from different companies.

Alliances with technical education centers, professional institutes and universities.

Source: Mineduc, 2017. | Belén Educa's Management Report 2017.

"I knew what I wanted to study, but I lacked self confidence. My tutor, my teachers and my family told me to believe in myself, that I could do it. Technical education does not mean that it will be easier; it means that I will have to work harder. I am proud of myself".

Ignacio Coña, 2016 Promotion – Juan Francisco Fresno School.

Gastronomy. Alliance with Duoc UC.

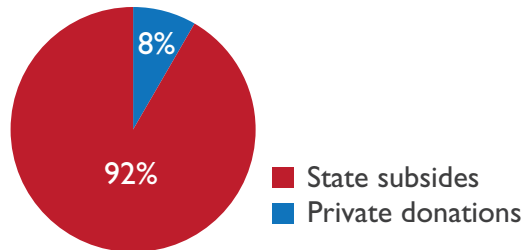
BELÉN'S MODEL: DAILY IMPROVEMENT

"Teach, learn and transform" moves the Belén Educa community. The teachers are open to learn and improve their teaching practices, to transform their student's lives. The school leaders from the schools accompany the teachers weekly to develop a continuous improvement process, to increase the quality of their teaching and to ensure the learning of their students. If a teacher improves his performance and his teaching skills, the students will have better learning opportunities.

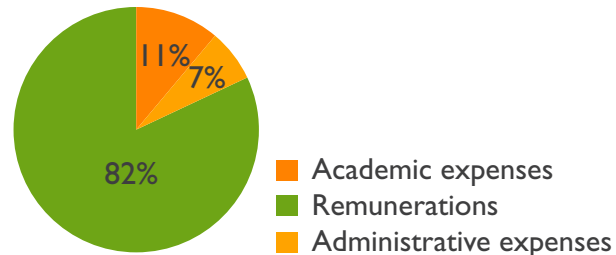
FINANTIAL INFORMATION

US \$249 are invested per month in a student that goes to a Belén Educa's school (US \$2.997 annual).

Where does Belén Educa's
funding come from?



Distribution
of expenses



Source: Belén Educa's Management Report 2017.

